

WEDA PUMP

World leader in professional submersible drainage pumps

SPAREPARTS CATALOGUE

RL 4140



SPARE PARTS CATALOGUE

RESERVDLSTÄLLNING

Följande uppgifter ska lämnas vid beställning av reservdelar för att undvika leveransfel :

1. Maskintyp.
2. Vältens serienummer.
3. Antal av önskad reservdel.
4. Reserdelens artikelnummer.
5. Reservedelens benämning.
6. Måttuppgifter vid beställning av metervara.

ERSATZTEILBESTELLUNG

Zur Vermeidung von Fehllieferungen sind bei der Bestellung von Ersatzteilen folgende Angaben zu machen :

1. Mashinentyp.
2. Herstellungsnummer.
3. Bestellmenge. (Quantity)
4. Ersatzteilbenennung. (Part N°)
5. Ersatzteilbenennung. (Description)
6. Massangaben bei Bestellung von Meterware.

PEDIDO DE RECAMBIOS

Para evitar errores en las entregas, deberá indicarse los siguientes datos al hacer un pedido de recambios :

1. Tipo de máquina.
2. Número de serie.
3. Cantidad de piezas deseadas. (Quantity)
4. Número de artículo de la pieza de recambio. (Part N°)
5. Denominación de la pieza. (Description)
6. Indíquese la medida al solicitar un artículo que se expide por metros.

RESERVEDELEN BESTELLEN

Om foutieve leveringen te voorkomen, vermeld bij uw bestelling de volgende informatie:

1. Type van de machine (pomp)
2. Machine serienummer
3. Aantal benodigd
4. Onderdeel nummer(s)
5. Onderdeel omschrijving
6. Afmetingen indien per lengte besteld wordt.

ORDERING SPARE PARTS

To avoid errors in delivery, please give the following information when ordering spare parts :

1. Type of machine.
2. Machine serial number.
3. Quantity required.
4. Part number.
5. Parts description.
6. Dimensions when ordering per length.

ORDINI DI RICAMBI

Per evitare errori nelle consegne di ricambi, Vi preghiamo di comunicarci le seguenti informazioni al momento dell'ordinazione :

1. Tipo di macchina.
2. Numero di serie della macchina.
3. Quantità dei pezzi desiderati. (Quantity)
4. Numero di codice del pezzo. (Part N°)
5. Descrizione del pezzo di ricambio. (Description)
6. Misura, in caso di ordine per metro.

COMMANDE DE PIÈCES DE RECHANGE

Les indications suivantes doivent être fournies lors de la commande de pièces de rechange, afin d'éviter toute erreur de livraison :

1. Type de machine.
2. Numéro de série.
3. Quantité désirée de pièce de rechange. (Quantity)
4. Numéro de la pièce de rechange. (Part N°)
5. Description de la pièce de rechange. (Description)
6. Longueur en cas de commande par mètre.

SPARE PARTS

Note : To place spare parts order, use :

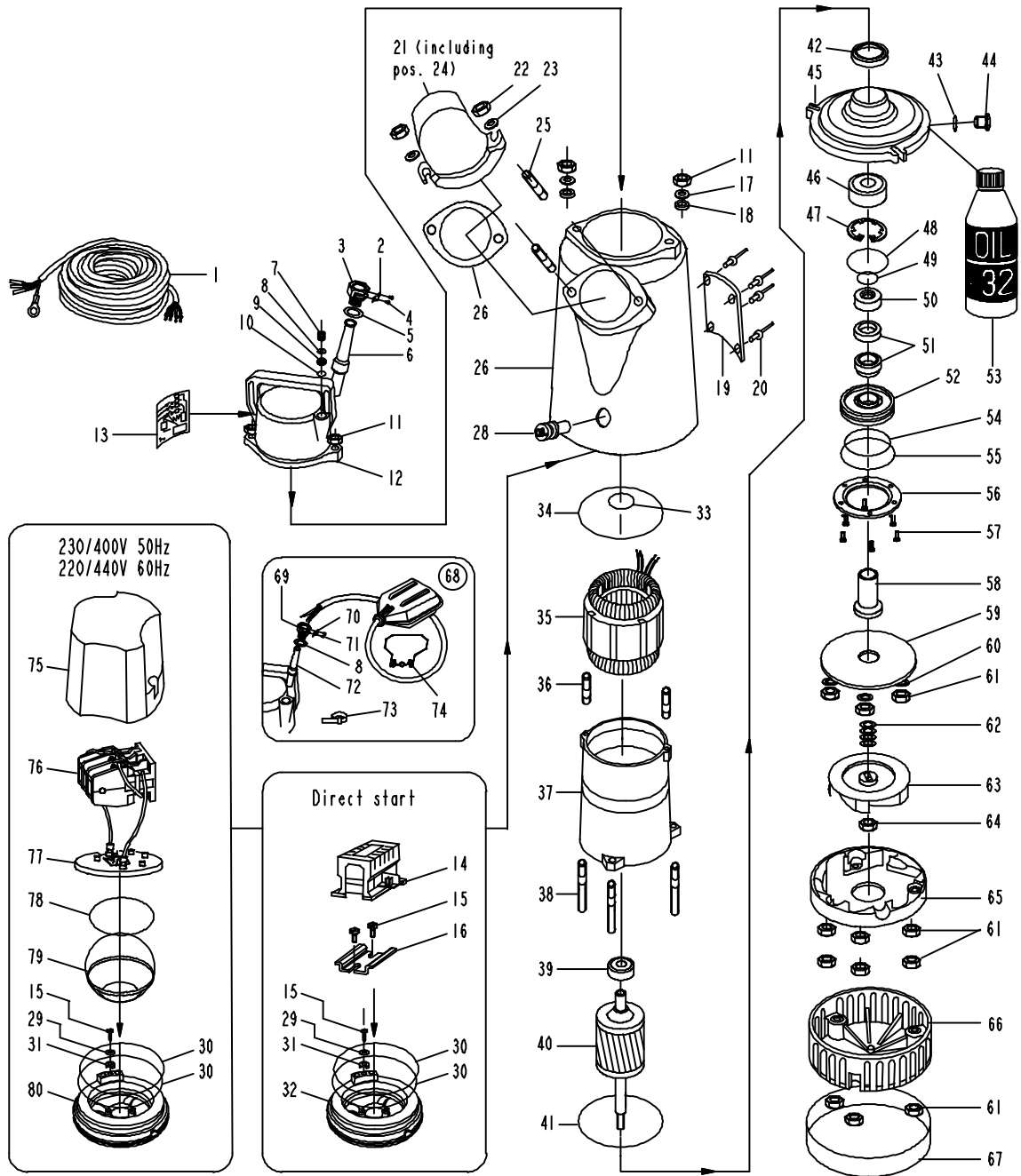
- The serial number of the machine
- The description and part number;

RL 4140

RL 4140							
Ref	Designation	P/N	Qty -3~-	Ref	Designation	P/N	Qty -3~-
1	Cable 4 x 1.5 mm ² , 20m	W214847	1	36	Stud bolt	W69617	2
	Cable CSA SOW 4xAWG16, 20m	W367175	1	37	Inner casing	W724012	1
2	Cable clamp	W214638	1	38	Stud bolt	W224539	3
3	Cable inlet cpl. (2, 4, 5)	W214639	1	39	Ball bearing, upper	W61007	1
4	Screw	W78670	1	40	Rotor with shaft	W724056	1
5	Washer	W214493	1	41	O ring	W65119	1
6	Cable sleeve	W214838	1	42	Radial seal	W740198	1
7	Blind plug	W214828		43	O ring	W65006	1
8	Washer	W214825	1	44	Oil plug	W254042	1
9	Rubber gasket	W214829	1	45	Bearing holder, lower	W720024	1
10	Washer	W214833	1	46	Ball bearing lower	W61021	1
11	Nut	W84207	4	47	Circlip	W50659	1
12	Contacteur cover	W212849	1	48	O ring	W65103	1
13	Wiring diagram 230/400V 50Hz, 220/440V 60Hz	W740041	1	49	O ring	W740293	1
	Wiring diagram 110-240V □	W214836	1	50	Seal holder	W740280	1
	Wiring diagram 400/500V Y	W214835	1	51	Mechanical seal	W740199	1
14	Contacteur See below	-	1	52	Sealing cover	W740279	1
15	Screw	W209902	3	54	O ring	W65101	1
16	Contacteur holder	W214871	1	55	O ring	W65102	1
17	Washer	W51163	2	56	Flange plate	W224910	1
18	Teflon washer	W214622	2	57	Screw	W76242	6
19	Data plate (CE)	W743583	1	58	Distance sleeve	W740281	1
	Data plate (CSA)	W743612	1	59	Wear plate	W223522	1
20	Rivet	W65431	4	60	Washer	W51168	3
21	Discharge 3" for hose	W203562	1	61	Nut	W84209	12
	Discharge 3" BSP thread	W203484	1	62	Trimming spacer	W224538	4
	Discharge 3" NPT thread	W203570	1	63	Impeller 50Hz	W243236	1
	Discharge 4" for hose	W203564	1		Impeller 60Hz	W243237	1
	Discharge 4" BSP thread	W203482	1	64	Nut	W604272	1
	Discharge 4" NPT thread	W203572	1	65	Diffusor	W242231	1
22	Nut	W84210	2	66	Strainer	W222527	1
23	Washer	W51170	2	68	Float switch	W214842	1
24	Discharge packing	W743466	1	69	Cable inlet cpl. (8, 70, 77)	W743411	1
25	Stud bolt	W69642	2	72	Cable sleeve	W214826	1
26	Outer casing	W241229	1	73	Cable tie	W209900	1
28	Rubber plug	W224880	1	74	Float holder clamp	W213843	1
29	Spring washer	W58956	1	75	Insulation cap lower	W213381	1
30	O Ring	W65112	2	76	Contacteur See below	-	1
31	Washer	W45883	1	77	Terminal block	W213202	1
32	Bearing bracket upper	W208138	1	78	O Ring	W65106	1
33	O ring	W65021	1	79	Insulation cap lower	W214387	1
34	O ring	W65115	1	80	Bearing bracket upper	W208048	1
35	Stator See below	-	1				

STATOR and CONTACTOR Part Numbers

Power supply	Stator	Contacteur ass'y (pos 14)	Stator Unit (pos 35 + 37)
380-415V - 3 - 50Hz	W724055	W743441	W743591
440V - 3 - 60Hz	W724055	W743441	W743591



WEDA PUMP

World leader in professional submersible drainage pumps

page left intentionally blank for your convenience.



Delta Pompen B.V.
Rigaweg 17
9723 TE Groningen
The Netherlands
Tel.: +31 (0)50-2072380

E-mail: info@deltapompen.com
Internet: <http://www.wedapump.com>

<p>SERVICE AND GUARANTEE. WEDAPUMP.COM is represented worldwide by a well-established service organization. Contact your local WEDAPUMP sales office if you require more information about servicing. Or left mentioned address.</p>

wedapump.com reserves the right to change specifications without notice